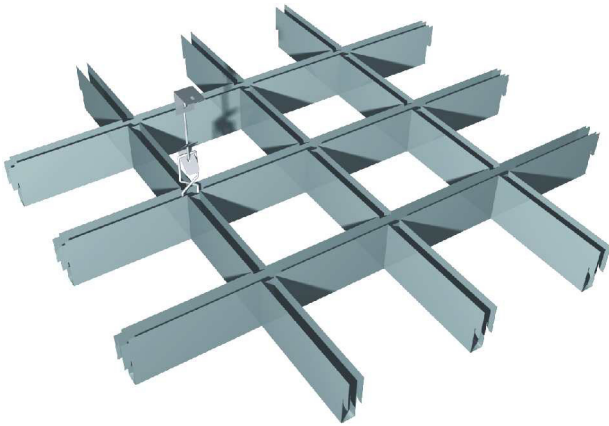
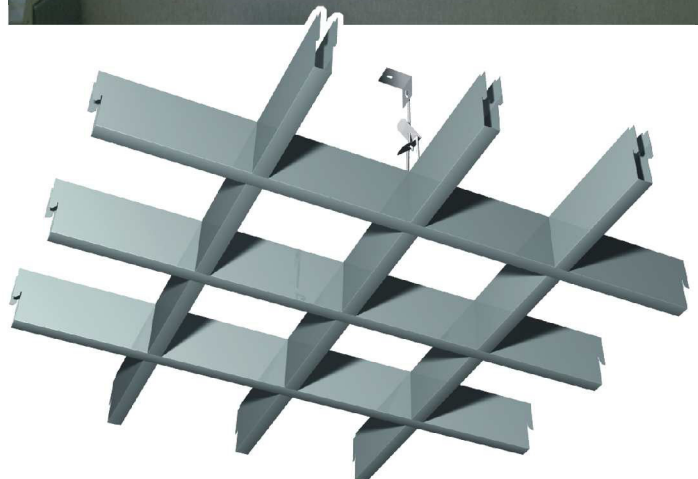
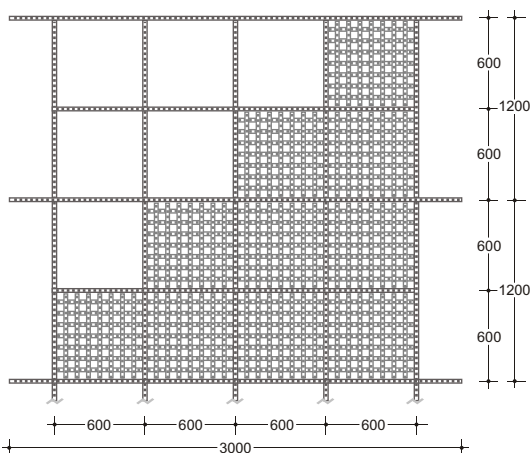
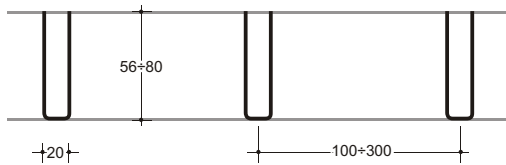


maxi U-RASTER®
 GALUMINIUM OPEN CELL
 U-PROFILE mm 20



- Lacunar look
- Main structure integrated in the ceiling
- Reduced volume of transport
- Full range of colours
- Various cell sizes



The U-profiles, orthogonally fitted, form modular panels to be inserted in a main structure and perfectly integrated in the ceiling.
 Maxi U-RASTER® reduces overall dimensions and transport to a minimum by assuring the best yield.
 Maxi U-RASTER® can be supplied with a central bevelling in the lower section of the U-profile.
 Maxi U-RASTER® can be supplied in a large range of standard cells and, on request, produced in various cell dimensions.